



# FISH Auto System

FAS-2000

MOLECULAR DIAGNOSTIC SERIES

Healgen Scientific Limited Liability Company  
Address: 3818 Fuqua Street, Houston, TX 77047, USA  
Tel: +1713-733-8088  
Fax: +1713-733-8848  
Website: [www.healgen.com](http://www.healgen.com)  
HG-FAS-23001

# FISH Auto System

## FAS-2000

FISH Auto System is mainly used to automate the solution change procedure of Fluorescence In Situ Hybridization (FISH). It can liberate technicians from FISH experiments, improve laboratory efficiency and reduce personnel work intensity.



### High Throughput

Up to 24 slide samples can be processed simultaneously.

### Less Reagent Dosage

Only 25mL is required for a single sample.

### All-in-one Design

Large touch screen software operation, new humanized operation interface, greatly improve customer's experience.

### Secure Structure

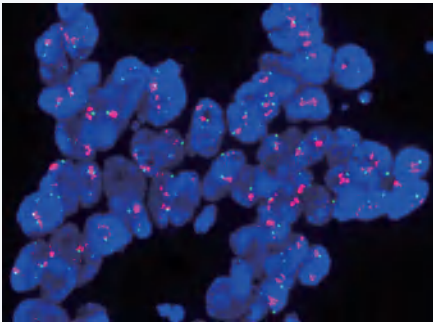
Liquid path and electrocircuit space isolation.

- Manual steps reduced from more than 30 to 3, only the addition of probes, coverslips and counterstaining required human manipulation during the FISH.
- 7 liquid feed channels to meet different experimental needs.
- The temperature and volume can be controlled precisely, which will improve the consistency and reliability of experimental results.
- The software prompts are clear and support switching between English and Chinese.
- Automatic recording of experimental processes, node prompts, and traceability of results.



Fault Information		
SN.	Fault Code	Fault Summary Information
1	0x2006	RgtPos. 6[Purified Water] reagent empty
HEALIN Fault Information		
SN.	Fault Code	Fault Summary Information
1	0x6001	Infusion valve blocked
2	0x6002	Drainage valve blocked

0x6001 : Infusion valve blocked



### Design Experiments Flexibly

Three independent running modules allow experiments to run at different temperatures simultaneously.

### Efficient Temperature Control

Precise temperature control $\pm 0.5^{\circ}\text{C}$ , rapid heating and cooling ( $30\text{-}95^{\circ}\text{C}$ ).

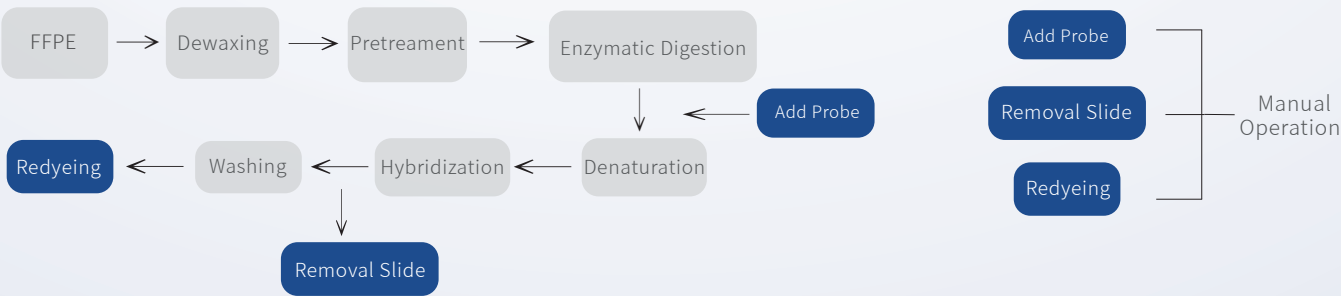
### Powerful Background Maintenance

User software prompts are clear and support switching between English and Chinese. The amount of reagent will be prompted before the task is executed automatically. Powerful functions, liquid shortage alarm, liquid circuit blockage alarm, etc.

### Wide Range of Applications

Histology (FFPE samples) ,Cytology (urine) ,Hematology (bone marrow, blood samples) and Genetics (chorionic villi, amniotic fluid), etc.

### Experimental Flow Chart



### Performance parameter

Product Model	FAS-2000
Capacity	24 slides
Number of Program	100
L × W × H	598 × 522 × 375mm
Weight	39 ± 1Kg
Type of specimen tested	FFPE, Cell samples (blood, bone marrow, urine, amniotic fluid)
Instrument Functions	Pre-treatment, gradient dehydration, co-denaturation, hybridization, washing
Dosing volume	25-50ml
Temperature and Accuracy	25° C ~ 95° C , $\pm 0.5^{\circ}\text{C}$
Liquid Filling Accuracy	$\leq 5\%$
Alcohol homogeneity	$\leq 10\%$
Operating Procedure	100 built-in customizations
Product Language	Chinese , English