

# ACCURATE<sup>®</sup> Oral Fluid Drug Test COT & THC/COT

The only oral fluid 510(k) cleared, CLIA waived COT test available.

## BENEFITS



- Rapid, On-Site Determination of Nicotine or Cannabinoid (THC) Use
- Results in 10 minutes

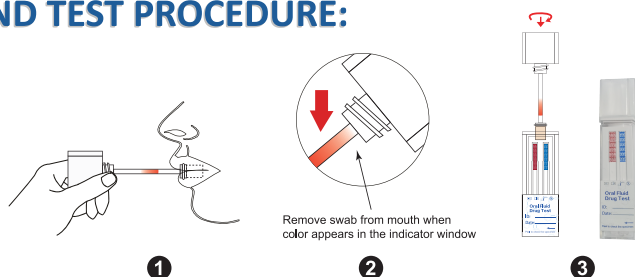
## FEATURES

Healgen would like to announce the new Healgen<sup>®</sup> Accurate<sup>®</sup> Oral Fluid Drug Tests for COT, THC, or both THC and COT. These tests are lateral flow, chromatographic immunoassays for the qualitative detection of the drug of abuse at the cut-off concentrations listed below.\*

Ref	Test	Calibrator	Cut-off (ng/mL)	Intended Use
<b>GBDSA-COT30</b>	Cotinine (COT)	(-) Cotinine	30	For Over-The-Counter (OTC) use only.
<b>GBDSA-THC40</b>	Marijuana (THC)	Delta-9-Tetrahydrocannabinol	40	For prescription and professional <i>in vitro</i> diagnostic use only.
<b>GBDSA-9724</b>	Cotinine (COT)	(-) Cotinine	30	
	Marijuana (THC)	Delta-9-Tetrahydrocannabinol	40	

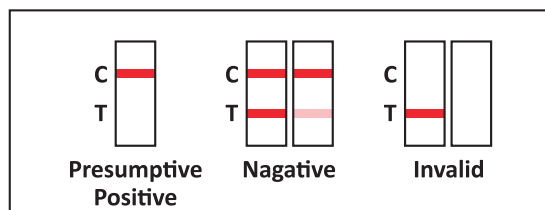
# ACCURATE<sup>®</sup> Oral Fluid Drug Test COT & THC/COT

## SIMPLE COLLECTION AND TEST PROCEDURE:



- 1) Collect oral fluid.
- 2) Saturation indicator on collection swab turns red to confirm sufficient volume is collected.
- 3) Results in 10 minutes after collection swab is screwed into test device.

## RESULTS INTERPRETATION:



**NEGATIVE:** A colored line in the control line region (C) and a colored line in the test line region (T) for a specific drug indicates a negative result. This indicates that the drug concentration in the oral fluid specimen is below the designated cut-off level for that specific drug.

**PRELIMINARY POSITIVE:** A colored line in the control line region (C) but no line in the test line region (T) for a specific drug indicates a positive result. This indicates that the drug concentration in the oral fluid specimen exceeds the designated cut-off for that specific drug.

**INVALID:** Control line (C) fails to appear. Insufficient specimen volume or incorrect procedural techniques are the most likely reasons for control line failure.

\*This test provides only a preliminary result. A more specific alternative chemical method should be used to obtain a confirmed presumptive positive result if the donor doesn't admit use or anytime required by testing procedures. Gas Chromatography / Mass Spectrometry (GC-MS), Liquid Chromatography / Mass Spectrometry (LC-MS) and their tandem mass-spectrometer versions are the preferred confirmatory methods. Careful consideration and judgment should be applied to any drug screen test result, particularly when evaluating preliminary positive results.